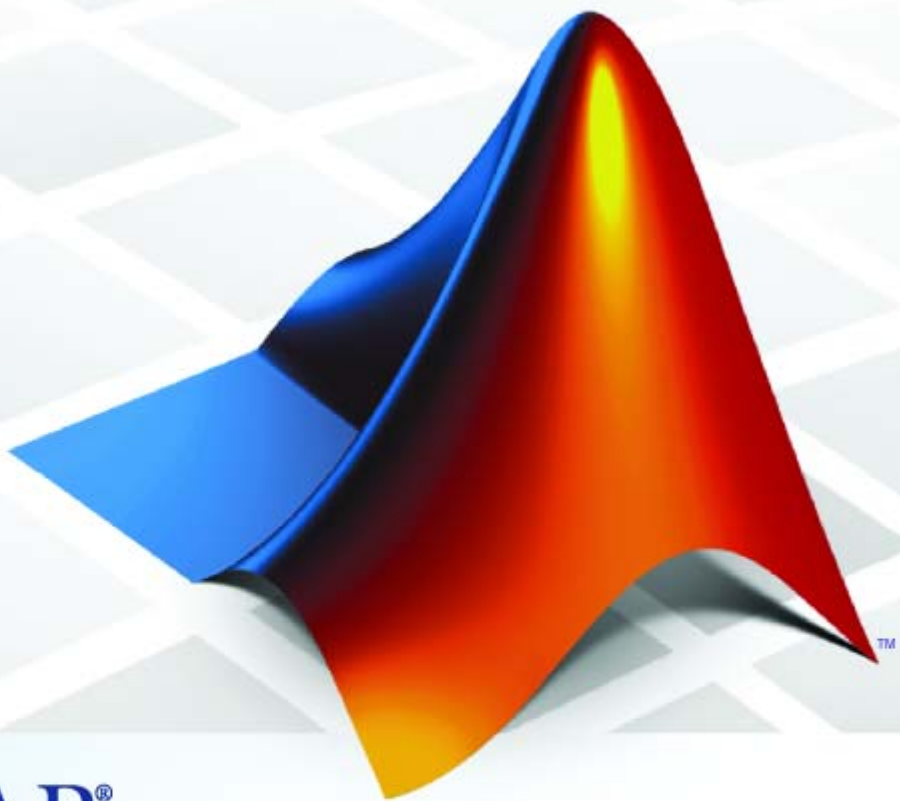


# Target Support Package™ 4 Reference Guide

*For Use with Texas Instruments C5000™*



**MATLAB®**

## How to Contact The MathWorks



[www.mathworks.com](http://www.mathworks.com)  
[comp.soft-sys.matlab](mailto:comp.soft-sys.matlab)  
[www.mathworks.com/contact\\_TS.html](http://www.mathworks.com/contact_TS.html)

Web  
Newsgroup  
Technical Support



[suggest@mathworks.com](mailto:suggest@mathworks.com)  
[bugs@mathworks.com](mailto:bugs@mathworks.com)  
[doc@mathworks.com](mailto:doc@mathworks.com)  
[service@mathworks.com](mailto:service@mathworks.com)  
[info@mathworks.com](mailto:info@mathworks.com)

Product enhancement suggestions  
Bug reports  
Documentation error reports  
Order status, license renewals, passcodes  
Sales, pricing, and general information



508-647-7000 (Phone)



508-647-7001 (Fax)



The MathWorks, Inc.  
3 Apple Hill Drive  
Natick, MA 01760-2098

For contact information about worldwide offices, see the MathWorks Web site.

*Target Support Package™ Reference Guide*

© COPYRIGHT 2009–2010 by The MathWorks, Inc.

The software described in this document is furnished under a license agreement. The software may be used or copied only under the terms of the license agreement. No part of this manual may be photocopied or reproduced in any form without prior written consent from The MathWorks, Inc.

FEDERAL ACQUISITION: This provision applies to all acquisitions of the Program and Documentation by, for, or through the federal government of the United States. By accepting delivery of the Program or Documentation, the government hereby agrees that this software or documentation qualifies as commercial computer software or commercial computer software documentation as such terms are used or defined in FAR 12.212, DFARS Part 227.72, and DFARS 252.227-7014. Accordingly, the terms and conditions of this Agreement and only those rights specified in this Agreement, shall pertain to and govern the use, modification, reproduction, release, performance, display, and disclosure of the Program and Documentation by the federal government (or other entity acquiring for or through the federal government) and shall supersede any conflicting contractual terms or conditions. If this License fails to meet the government's needs or is inconsistent in any respect with federal procurement law, the government agrees to return the Program and Documentation, unused, to The MathWorks, Inc.

### Trademarks

MATLAB and Simulink are registered trademarks of The MathWorks, Inc. See [www.mathworks.com/trademarks](http://www.mathworks.com/trademarks) for a list of additional trademarks. Other product or brand names may be trademarks or registered trademarks of their respective holders.

### Patents

The MathWorks products are protected by one or more U.S. patents. Please see [www.mathworks.com/patents](http://www.mathworks.com/patents) for more information.

### Revision History

September 2009	Online only	New for Version 4.0 (Release 2009b)
March 2010	Online only	Revised for Version 4.1 (Release 2010a)

## System Requirements

**1**

## Block Reference

**2**

C5510 DSK (c5510dsk) ..... 2-2

## Blocks — Alphabetical List

**3**

## Index



# System Requirements

---

For detailed information about the software and hardware required to use Target Support Package™ software, refer to the Target Support Package system requirements areas on the MathWorks Web site:

- Requirements for Target Support Package:  
[www.mathworks.com/products/target-package/requirements.html](http://www.mathworks.com/products/target-package/requirements.html)
- Requirements for use with TI's C5000™:  
[www.mathworks.com/products/target-package/ti-adaptor/](http://www.mathworks.com/products/target-package/ti-adaptor/)



# Block Reference

---

C5510 DSK (c5510dsk) (p. 2-2)

Blocks for TMS320VC5510 DSP  
Starter Kit (DSK) (c5510dsk)

## **C5510 DSK (c5510dsk)**

C5510 DSK ADC

Configure AIC23 and peripherals to collect data from analog jacks and output digital data

C5510 DSK DAC

Configure AIC23 codec and peripherals to send data stream to output jack



# Blocks — Alphabetical List

---

# C5510 DSK ADC

## Purpose

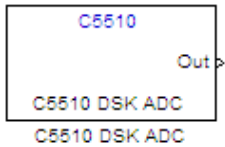
Configure AIC23 and peripherals to collect data from analog jacks and output digital data

## Library

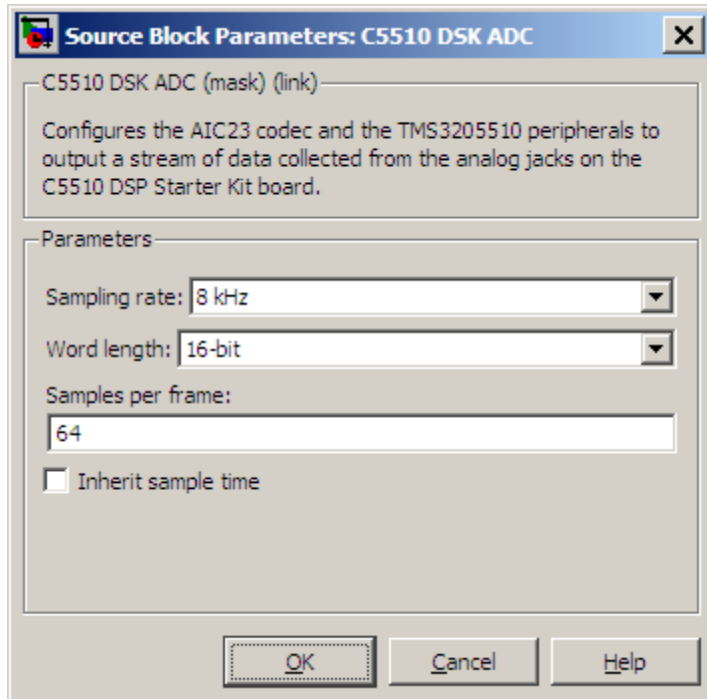
TMS320VC5510 DSP Starter Kit (DSK) (c5510dsk)

## Description

Configures the AIC23 codec and the TMS320C5510 peripherals to output a stream of digital data. The block collects this data from the analog jacks on the C5510 DSP Starter Kit board.



## Dialog Box



## **Sampling rate**

Set the rate at which the analog-to-digital converter samples the analog input. A higher rate increases the resolution of the data the ADC outputs.

## **Word length**

Set the number of data bits the ADC creates for each sample. Increasing the word length increases the accuracy of the data in each sample. If your model also contains a DAC block, set the word length in the DAC block to match that of the ADC block.

## **Samples per frame**

Set the number of samples the ADC buffers internally before it sends the digitized signals, as a frame vector, to the next block in the model. This value defaults to 64 samples per frame. The frame rate depends on the sample rate and frame size. Thus, if you set **Sampling Rate** to 8 kHz, and **Samples per frame** to 32, the resulting frame rate is 250 frames per second ( $8000/32 = 250$ ).

## **Inherit sample time**

Select whether the block inherits the sample time from the model base rate or from the Simulink base rate. You can locate the Simulink base rate in the Solver options in Configuration Parameters. Selecting Inherit sample time directs the block to use the specified rate in model configuration. Entering -1 configures the block to accept the sample rate from the upstream HWI, Task, or Triggered Task blocks.

## **See Also**

C5510 DSK DAC

# C5510 DSK DAC

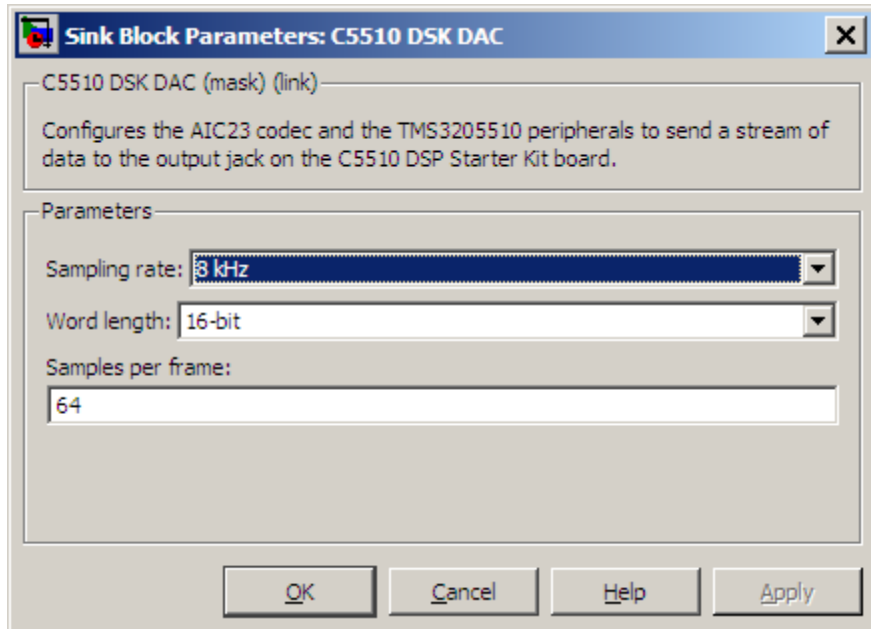
**Purpose** Configure AIC23 codec and peripherals to send data stream to output jack

**Library** TMS320VC5510 DSP Starter Kit (DSK) (c5510dsk)

**Description** Configures the AIC23 codec and the TMS3205510 peripherals to send a stream of data to the output jack on the C5510 DSP Starter Kit board.



## Dialog Box



**Sampling Rate**

Set the rate at which the digital-to-analog converter receives each data sample. If your model contains an ADC block, set this value to match the sampling rate of the ADC block.

**Word length**

Set the number of bits in each data input sample the DAC. If your model also contains an ADC block, set the word length in the DAC block to match that of the ADC block. If you do not use an accurate setting, the DAC cannot convert the data correctly.

**Samples per frame**

Set the number of samples per data input frame. Match this value with the value of the block creating the data frames. This value defaults to 64 samples per frame.

**See Also**

C5510 DSK ADC

# C5510 DSK DAC

---

## **C**

C5510 DSK ADC 3-2

C5510 DSK DAC 3-4